



# The Leader of Clean and Smart Energy

## Company Introduction

CHG EnSOL Renewable Technology Co., Ltd., is a wholly-owned subsidiary of Central New Energy Holding Group (Stock Code: 01735.HK), Aligned with China's "carbon peaking and carbon neutrality goals" and driven by its vision to become an excellent enterprise in the solar industry, its business encompasses innovative R&D, intelligent manufacturing, and sales of solar cells and modules, along with solar power plant construction and low-carbon smart industrial park development and operation. Committed to technological innovation, the company is strategically positioned as a specialized manufacturer and industry leader of next-generation solar cells while establishing itself as a green energy system integration provider. It simultaneously develops multiple technology solutions including solar-storage-charging integration, BC (back contact), hydrogen-ammonia-methanol production, perovskite technologies. Adhering to high-quality development as its primary mission, the company adapts to local conditions to cultivate cutting-edge production technologies, contributing to Chinese-style modernization.

### 60+GW

The goal for the next five years is to achieve an N-type TOPCon cell production capacity of 60+GW

### 30 billion

The annual output value is expected to exceed 30 billion Yuan

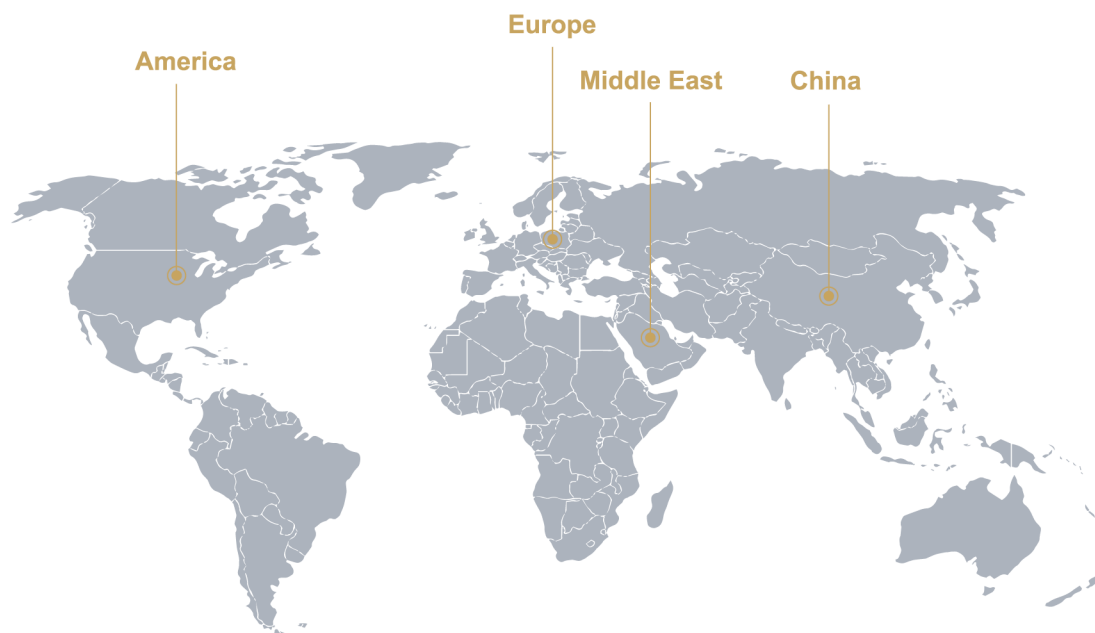


# Cooperation Partners



## Globalization

Driven by advanced technologies and strict quality control, we are committed to expanding into global markets. According to domestic policy conditions and market demand, we are vigorously developing advanced renewable energy industry clusters, meanwhile, we are exploring opportunities in the Middle East, Europe, America and other regions to expand our international business.



## Capacity Layout

The company has planned four production bases located in Huainan, Fengtai, Tongcheng, and Tongxin, Ningxia. Over the next five years, it targets to achieve an N-type TOPCon cell production capacity of over 60GW and a module capacity of 12GW, with projected annual output value exceeding 30 billion Yuan.

The Huainan Fengtai Photovoltaic Industrial Base has four phases of development: Phase I involves a 3GW photovoltaic module project, Phase II consists of a 9GW N-type TOPCon cells project, Phases III and IV include a 16 GW N-type TOPCon battery project and a 4GW photovoltaic module project, which have now started construction, and energy storage construction is planned simultaneously; the Tongcheng photovoltaic industry base plans to build a 20GW N-type TOPCon battery project, of which the first phase of a 12GW N-type TOPCon battery project is under construction; The base in Tongxin, Ningxia plans to sign a contract for a 12GW N-type TOPCon battery project and a 5GW photovoltaic module project.



# Smart Factory

- ISO CLASS 6 workshop
- World-leading automated intelligent workshop, equipped with fully automated production equipment, 5G fully intelligent AGV material and product transmission system
- Information collection system adopts fully digital information MES management



Intelligent



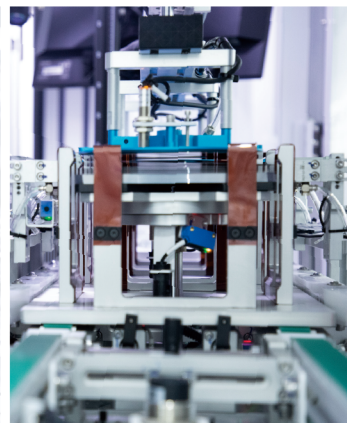
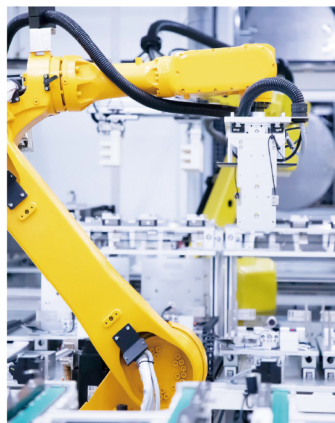
Visualization



Informatization



Digitization



# CHG ENSOL "C-STAR" Series Products



## High Efficiency

The battery has high conversion efficiency



## High Bifaciality

Up to 85% bifacial gain



## Better Temperature Coefficient

$\leq -0.29\%/^{\circ}\text{C}$ , n-TOPCon battery modules generate more power in working condition than conventional modules



## Low Degradation

First year degradation  $\leq 1\%$ ,  
Following year degradation  $\leq 0.4\%$



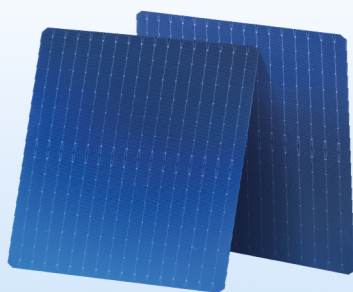
## NO LeTID/LID

Prevent Light and elevated Temperature Induced Degradation (LeTID) and Light Induced Degradation (LID)



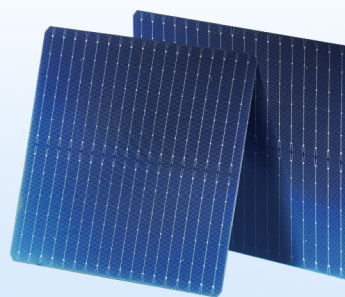
## Better Low Light Response

Better power generation performance under low light conditions such as morning, evening and cloudy conditions



**TC-NG12R16B**

182.2mm×210mm±0.5mm  
φ272mm±0.5mm



**TC-NG12R18B**

182.2mm×210mm±0.5mm  
φ272mm±0.5mm



**TC-NM10L16B**

182.2mm×183.75mm±0.5mm  
φ256mm±0.5mm



**BC-NM10L16B**

182.2mm×183.75mm±0.5mm  
φ256mm±0.5mm



**TCHC-NG12R16B**

182.2mm×105mm±0.5mm

# CHG ENSOL Module Products



## Excellent Power Output

Adopting large-sized, highly efficient cell technology and leading manufacturing processes to effectively enhance product power



## Excellent Temperature Coefficient

The product has excellent temperature coefficient, outstanding outdoor power generation performance and longer service life



## Ultra-multi-busbar Technology

Better light utilization and current collecting capability, effectively improve power output and reliability



## NO LeTID/LID

While achieving efficiency gains in N-type solar cells, virtually no LID loss



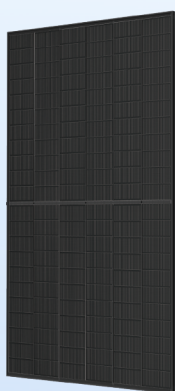
## Excellent Irradiance Response

Superior Low-light power generation performance in environments such as early morning, evening and cloudy conditions



## High-yield

Effectively reduce system BOS costs, lower LCOE, and increase ROI

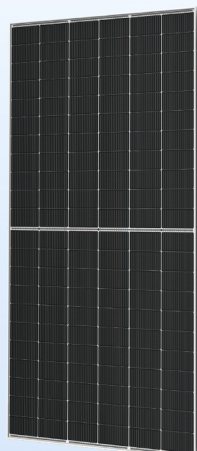


CHGMN48D2

1762×1134×30mm  
23.7kg

**468W**

Maximum output power

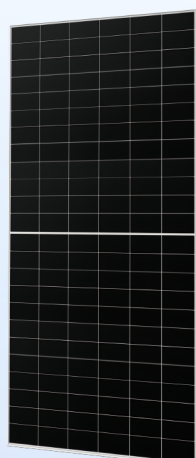


CHGMN66D2

2382×1134×30mm  
32.8kg

**655W**

Maximum output power

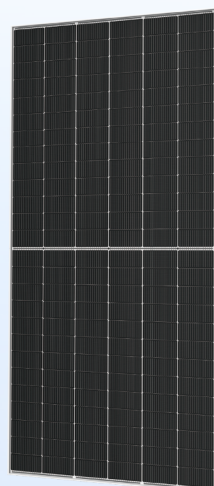


CHGMB72D

2382×1134×30mm  
32.3kg

**660W**

Maximum output power

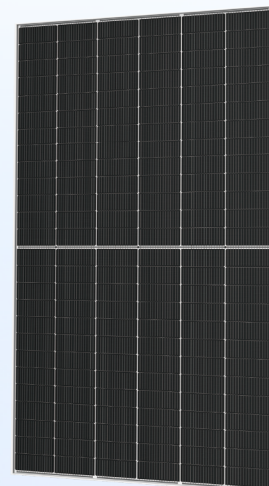


CHGMN78D1

2465×1134×30mm  
33.9kg

**660W**

Maximum output power



CHGMN78D4

2465×1303×33mm  
39.0kg

**761W**

Maximum output power



CHG EnSOL Renewable Technology Co., Ltd.

☎ +86 0551 6387 6010

📍 22F, Block A, CHG Building, No. 1227, Fanhua Avenue,  
Hefei Economic and Technological Development Zone